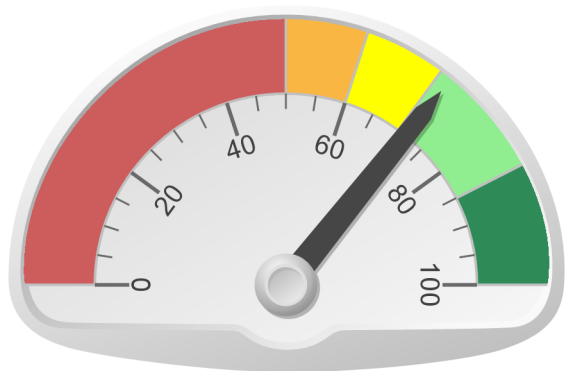


Overall Score



72%

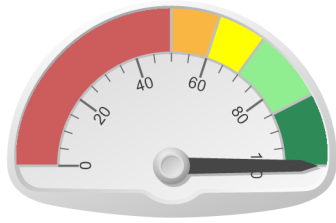
Previous: 73%

	Current Score	Previous Score
<i>Asset Management</i>		
Devices Under Management	100.00%	100.00%
Server and Network Warranty	N/A	N/A
Workstation, Laptop and Mobile Warranty	10.00%	10.00%
<i>Security Monitoring</i>		
Antivirus	33.33%	33.33%
Windows Patching	53.85%	53.85%
Third Party Patching	100.00%	100.00%
Network Reliability	100.00%	99.97%
<i>Performance</i>		
Servers	75.00%	83.33%
Workstations/Laptops	100.00%	100.00%

Asset Management

Devices Under Management

When devices are under management, they are being proactively monitored and managed on your behalf. Below is a breakdown of device classes currently being managed compared to the total devices discovered in your environment along with any changes during this reporting period.



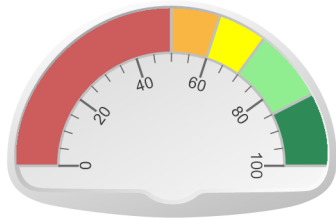
Device Classes	Managed	Added / Removed
Other	0% (0/0)	-1
Printer	100% (2/2)	-1
Switch/Router	100% (4/4)	
Windows Laptop	100% (13/13)	
Windows Server	100% (12/12)	
Windows Workstation	100% (2/2)	
Workstations - OS X	100% (15/15)	
Total	100% (48/48)	-2

Score
100%

Previous: 100%

Server and Network Warranty

Downtime of mission critical devices such as servers, switches and routers can seriously affect business. It's important to keep these warranties up-to-date. Below is the current status of the warranty on your server and network hardware.



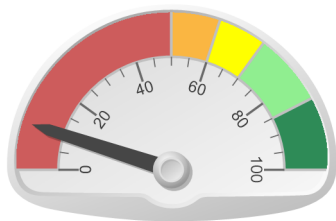
Device Warranty Status	Percentage
Valid warranties (90+ days until expiry)	0% (0/0)
Warranties that will expire soon (within 90 days)	0% (0/0)
Expired warranties	0% (0/0)
Total	0% (0/0)

Score
N/A

Previous: N/A

Workstation, Laptop and Mobile Warranty

It is important to have valid warranties for your desktop systems to maintain access to expedited resolutions and repair components. Below is the current status of the warranty on your workstations and laptops.



Device Warranty Status	Percentage
Valid warranties (90+ days until expiry)	10% (1/10)
Warranties that will expire soon (within 90 days)	0% (0/10)
Expired warranties	90% (9/10)
Total	10% (1/10)

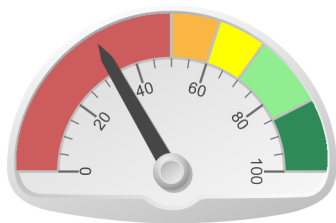
Score
10%

Previous: 10%

Security Monitoring

Antivirus

Devices connected to the network without up-to-date antivirus protection are vulnerable to attack and pose a potential security risk. Below is an overview of your antivirus coverage and whether their definitions are current.



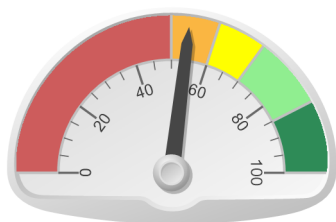
Device Class	Installed	Current
Windows Laptop	15% (2/13)	15% (2/13)
Windows Server	58% (7/12)	58% (7/12)
Windows Workstation	0% (0/2)	0% (0/2)
Total	33% (9/27)	33% (9/27)

Score
33%

Previous: 33%

Windows Patching

Windows devices connected to the network without up-to-date Windows patches pose a potential security risk. Below is a summary of Windows patch management coverage and whether the devices are up-to-date.



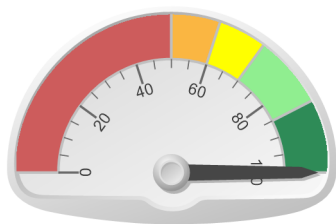
Device Class	Managed	Current
Windows Laptop	8% (1/13)	100% (1/1)
Windows Server	100% (12/12)	50% (6/12)
Windows Workstation	0% (0/2)	0% (0/0)
Total	48% (13/27)	54% (7/13)

Score
54%

Previous: 54%

Third Party Patching

Third party patches address known problems and security issues with non-Microsoft applications. Below is a summary of third party patch management coverage and whether the devices are up-to-date.



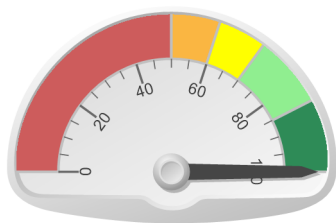
Device Class	Managed	Current
Windows Laptop	8% (1/13)	100% (1/1)
Windows Server	8% (1/12)	100% (1/1)
Windows Workstation	0% (0/2)	0% (0/0)
Total	7% (2/27)	100% (2/2)

Score
100%

Previous: 100%

Network Reliability

Downtime of server and network infrastructure can affect your ability to do business. Below is a representation of the uptime of critical hardware in your environment such as firewalls, routers and key servers.



Device Class	Availability
Switch/Router	100.00%
Windows Server	100.00%
Overall Availability	100.00%

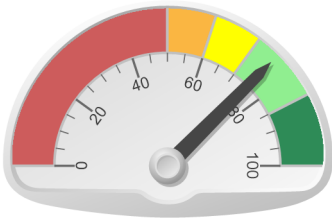
Score
100%

Previous: 100%

Performance

Servers

Servers reaching or exceeding capacity can impact its ability to respond to your requests in a timely manner. Below is a review of the server infrastructure based on its average resource consumption in the reporting period.



Status	Percentage
Servers within capacity	67% (8/12)
Servers reaching capacity	8% (1/12)
Servers exceeding capacity	25% (3/12)

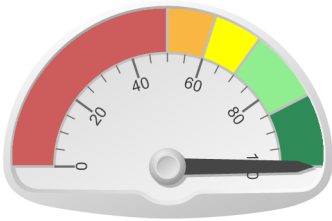
Score

75%

Previous: 83%

Workstations/Laptops

Workstations reaching or exceeding capacity slow down, create service issues, and ultimately result in a less productive work force. Below is a review of workstations and laptops based on their average resource consumption in the reporting period.



Status	Percentage
Workstations/Laptops within capacity	90% (9/10)
Workstations/Laptops reaching capacity	10% (1/10)
Workstations/Laptops exceeding capacity	0% (0/10)

Score

100%

Previous: 100%